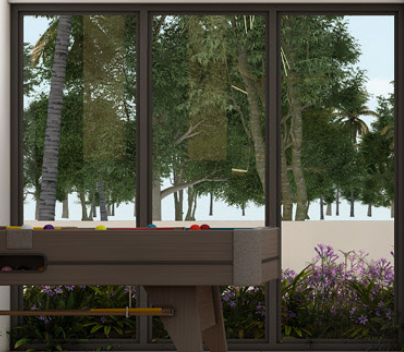


aspan  
celesta

BUILDING DREAMS,  
ONE BRICK AT A TIME







# About Aspan

Aspan Builders and Developers is a company incorporated in 2021 with a vision to fulfil every home seeker's dream to its minute details. Lead by its dynamic founder CEO Mr. Shukoor C who has more than two decades of in-depth experience in Residential, Retail and Commercial projects. With futuristic ideas and a commitment to create every structure with utmost care by using the best and most modern methods in the industry, the company aims to become one of the prominent names among the real estate developers in Kerala.



# About Celesta

Aspan Celesta, the flagship project of the group, is a luxury apartment tower located on the side of the NH Bypass, Near Cyber Parks which is easily accessible from all major hot spots in the city and has state-of-the-art amenities and facilities. Designed by the renowned architect, Stapati Calicut, this Apartment Project is all set to become the best residential address in the city.

Total Floors : **Basement + Ground + 15 floors**

Built-up Area : **2,14,732 Sq. Ft.**

Super Built-up Area : **1,65,575 Sq. Ft.**

Car Park : **Basement, Ground, First and  
Second Floor**

Number of Apartments : **115 (from 3<sup>rd</sup> to 15<sup>th</sup> floor)**

3<sup>rd</sup> Floor : **3BHK – 4 Nos & 2BHK – 3 Nos**

4<sup>th</sup> to 15<sup>th</sup> Floor : **3BHK – 5 Nos &  
2BHK – 4 Nos on each floor**









# What We Have for You

A harmonious blend of style and functionality ensures a delightful stay in every way. Experience unparalleled comfort in our apartments, designed for modern living. We have carefully crafted the best for you here.







\*DISCLAIMER: FURNISHING, INTERIOR ACCESSORIES AND FITTINGS SHOWN IN THE IMAGES ARE FOR REPRESENTATIVE PURPOSE ONLY

🏠 Gymnasium

🏠 Multi-functional Hall

🏠 Guest Suite

🏠 Jogging Track

🏠 Badminton Court

🏠 Association Room

🏠 Reticulated Gas Supply

🏠 Rain Water Harvesting

🏠 Access Control For Visitors

🏠 Children's Play Area

🏠 Library

🏠 Snooker Table

🏠 Foosball Table

🏠 Lounge

🏠 CCTV

🏠 Amphitheatre

🏠 Swimming Pool

🏠 Kids Pool





\*DISCLAIMER: FURNISHING, INTERIOR ACCESSORIES AND FITTINGS SHOWN IN THE IMAGES ARE FOR REPRESENTATIVE PURPOSE ONLY

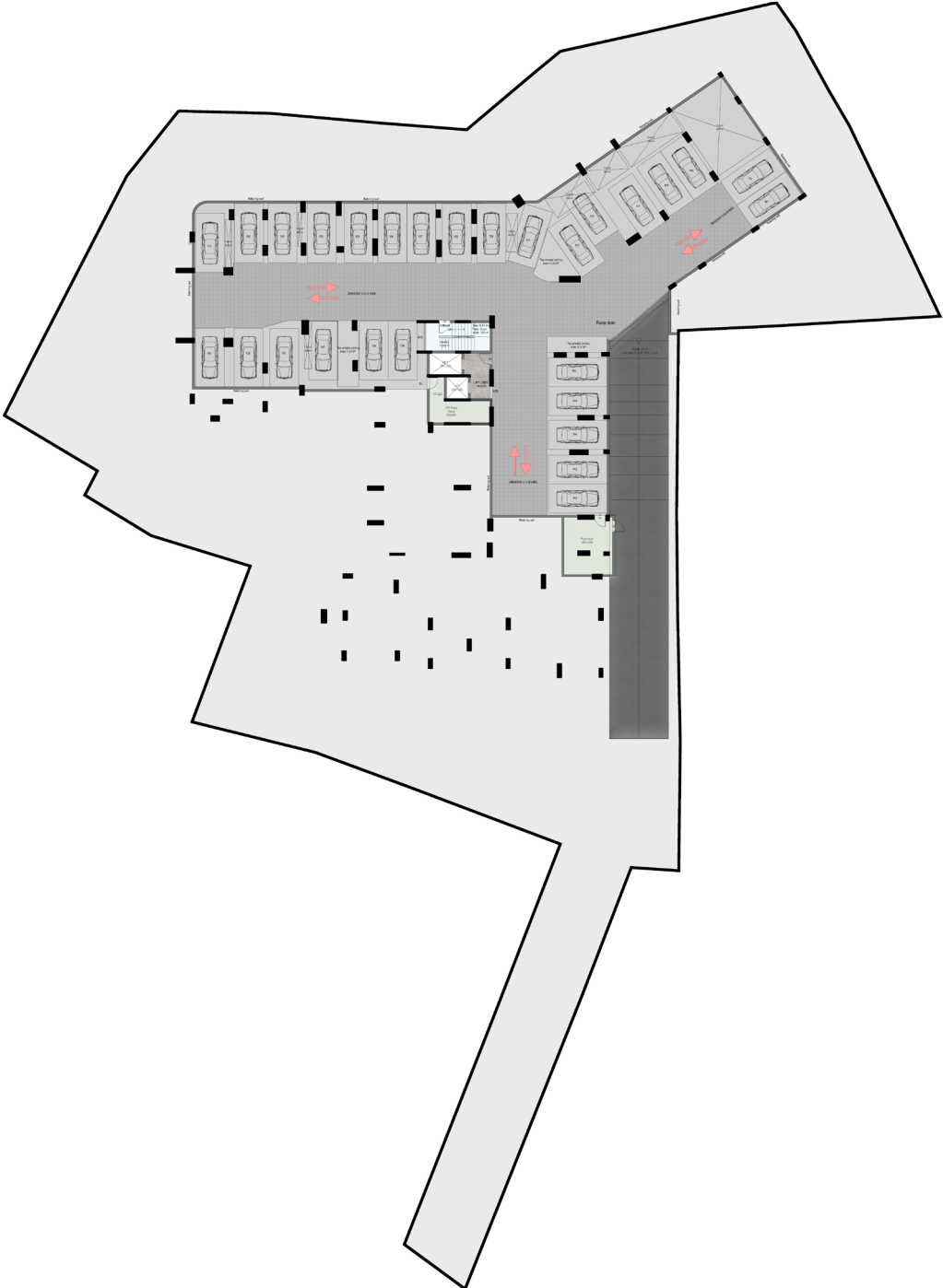
# Infinity Pool With A Celestial View

Swim beneath the stars, surrounded by an open performance area on the terrace floor, all overlooking the captivating sky.





# BASEMENT FLOOR PLAN



# GROUND FLOOR PLAN



# FIRST FLOOR PLAN





# SECOND FLOOR PLAN



# THIRD FLOOR PLAN (PODIUM)



# TYPICAL FLOOR PLAN (4,6,8,10,12 & 14<sup>th</sup> FLOOR)



# TYPICAL FLOOR PLAN (5,7,9,11,13 & 15<sup>th</sup> FLOOR)



# TYPE A – TYPICAL FLOOR PLAN

3BHK - 1544 sqft

CARPET AREA (as per kerala RERA) - 1088 sqft



KEY PLAN



\*Dimensions may vary slightly during construction

\*Furniture and fixtures are indicative only

\*All dimensions are in centimeters

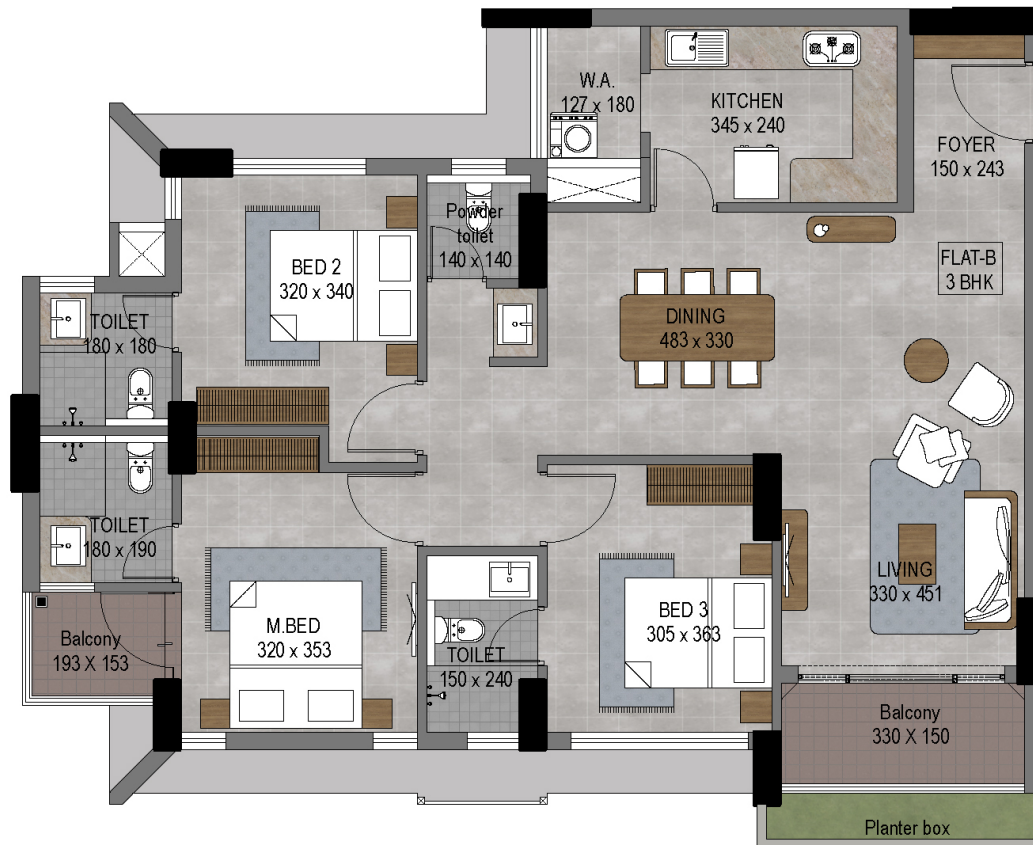
\*Structural members may slightly vary after final design

# TYPE B – TYPICAL FLOOR PLAN

3BHK - 1545 sqft

CARPET AREA (as per kerala RERA) - 1112 sqft

KEY PLAN



\*Dimensions may vary slightly during construction

\*Furniture and fixtures are indicative only

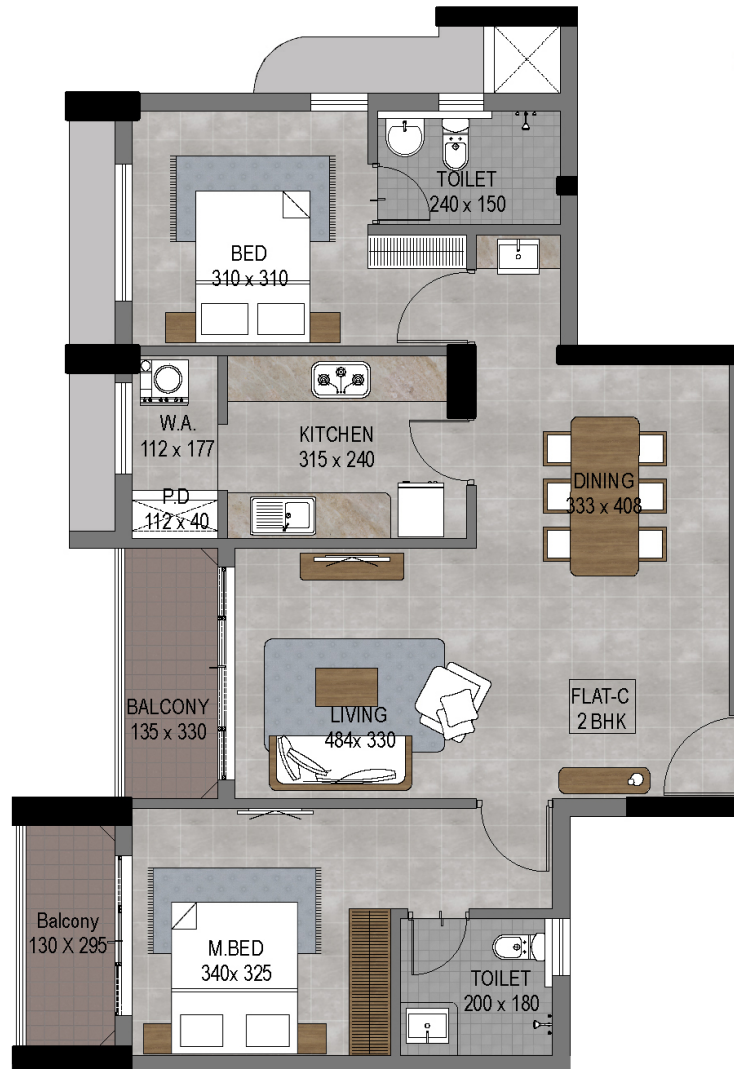
\*All dimensions are in centimeters

\*Structural members may slightly vary after final design

# TYPE C – TYPICAL FLOOR PLAN

2BHK - 1228 sqft

CARPET AREA (as per kerala RERA) - 826 sqft



\*Dimensions may vary slightly during construction

\*Furniture and fixtures are indicative only

\*All dimensions are in centimeters

\*Structural members may slightly vary after final design

# TYPE D – TYPICAL FLOOR PLAN

3BHK - 1581 sqft

CARPET AREA (as per kerala RERA) - 1112 sqft

KEY PLAN



\*Dimensions may vary slightly during construction

\*Furniture and fixtures are indicative only

\*All dimensions are in centimeters

\*Structural members may slightly vary after final design



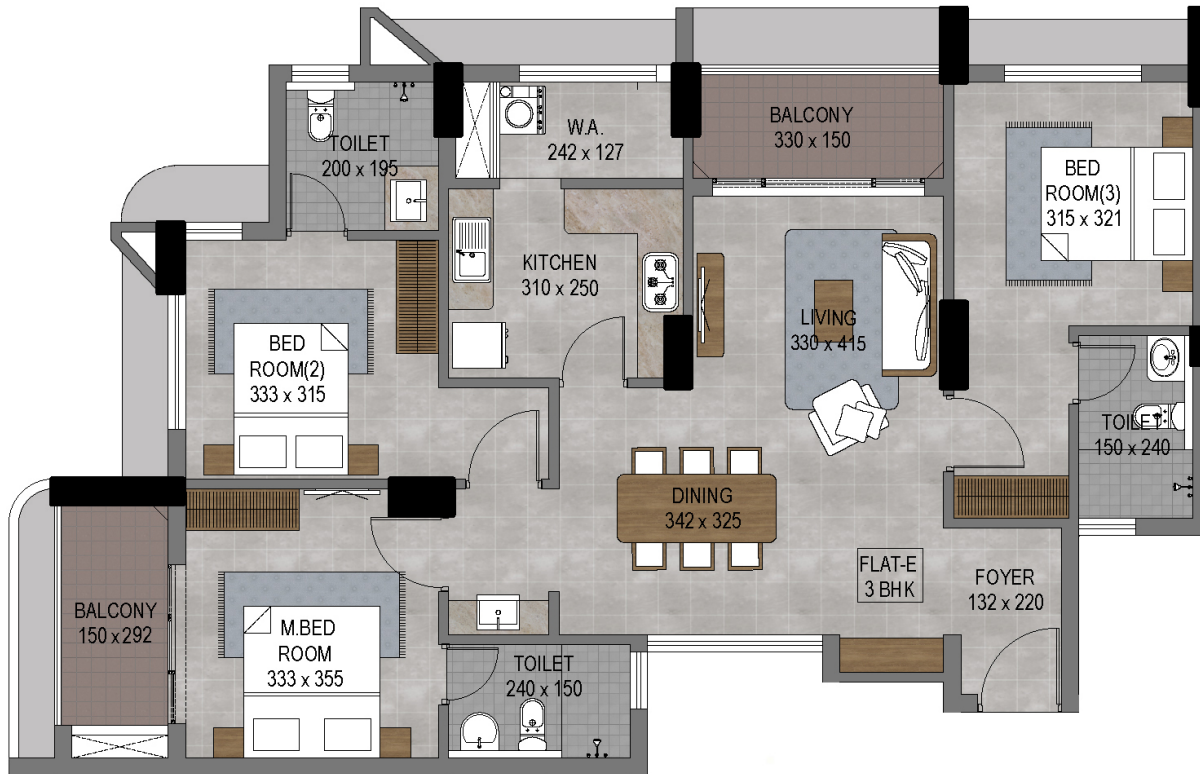
# TYPE E – TYPICAL FLOOR PLAN

3BHK - 1474 sqft

CARPET AREA (as per kerala RERA) - 1038 sqft



KEY PLAN



\*Dimensions may vary slightly during construction

\*Furniture and fixtures are indicative only

\*All dimensions are in centimeters

\*Structural members may slightly vary after final design

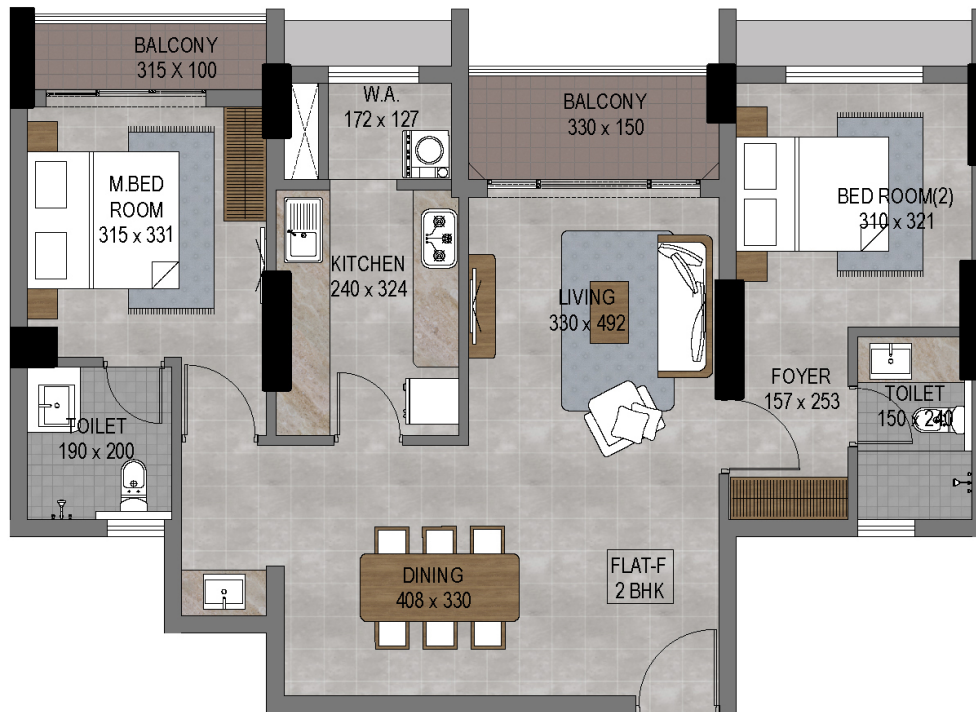
# TYPE F – TYPICAL FLOOR PLAN

2BHK - 1224 sqft

CARPET AREA (as per kerala RERA) - 851 sqft



KEY PLAN



\*Dimensions may vary slightly during construction

\*Furniture and fixtures are indicative only

\*All dimensions are in centimeters

\*Structural members may slightly vary after final design

# TYPE G – TYPICAL FLOOR PLAN

3BHK – 1835 sqft

CARPET AREA (as per kerala RERA) – 1273 sqft



KEY PLAN



\*Dimensions may vary slightly during construction

\*Furniture and fixtures are indicative only

\*All dimensions are in centimeters

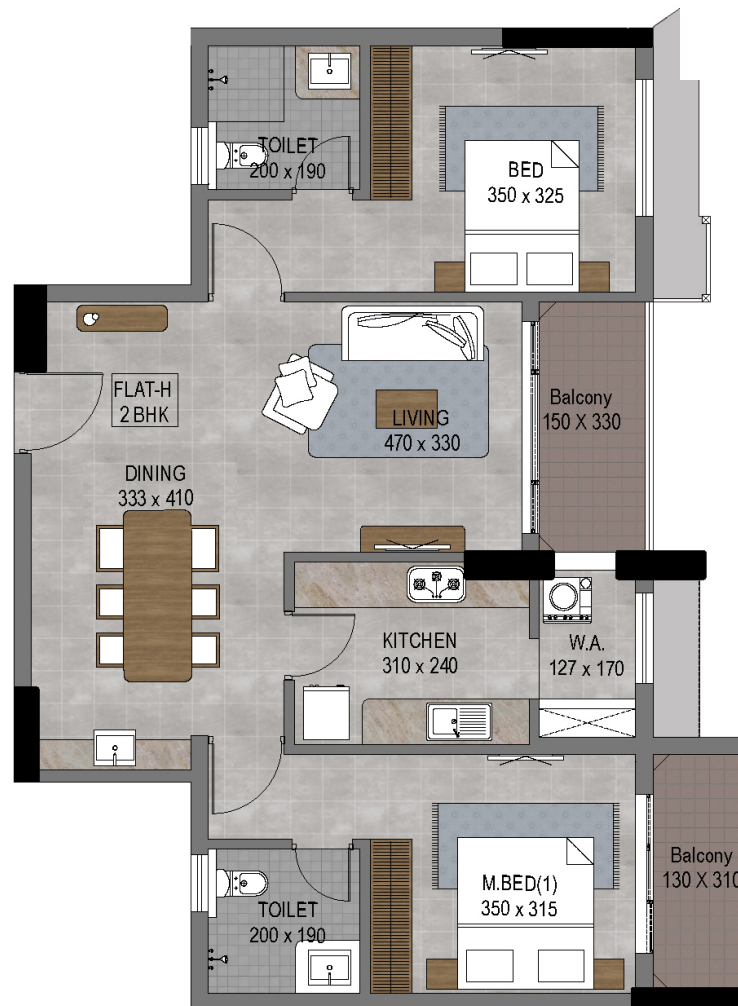
\*Structural members may slightly vary after final design

# TYPE H – TYPICAL FLOOR PLAN

2BHK - 1229 sqft

CARPET AREA (as per kerala RERA) - 845 sqft

KEY PLAN



\*Dimensions may vary slightly during construction

\*Furniture and fixtures are indicative only

\*All dimensions are in centimeters

\*Structural members may slightly vary after final design

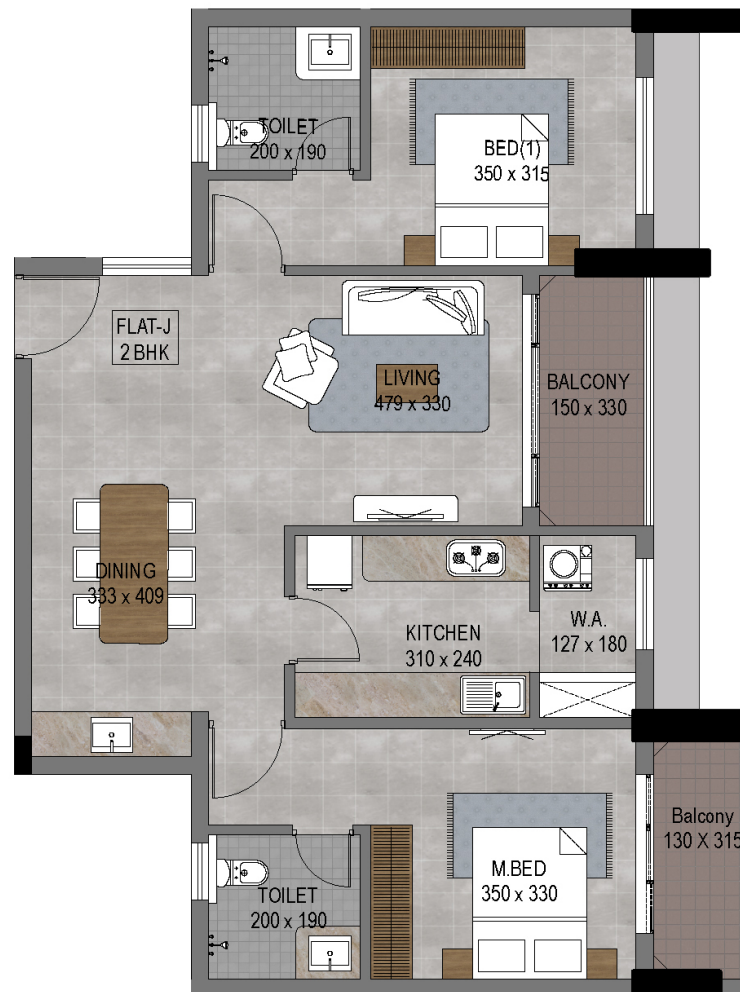
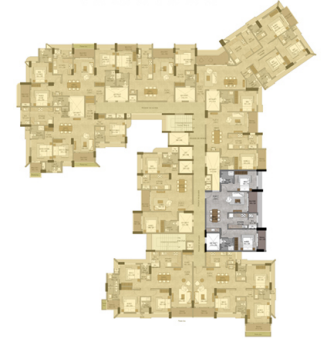
# TYPE J – TYPICAL FLOOR PLAN

2BHK - 1247 sqft

CARPET AREA (as per kerala RERA) - 851 sqft



KEY PLAN



\*Dimensions may vary slightly during construction

\*Furniture and fixtures are indicative only

\*All dimensions are in centimeters

\*Structural members may slightly vary after final design

# ROOF PLAN



# Spotlighting

UL Cyber Park - 0.5 km

Thondayad Junction - 2.1 km

Hilite Mall - 1.5 km

Presentation HSS - 3.2 km

Medical College Hospital - 3.6 km

Lulu Mall - 4 km

Devagiri Public School - 4.3 km

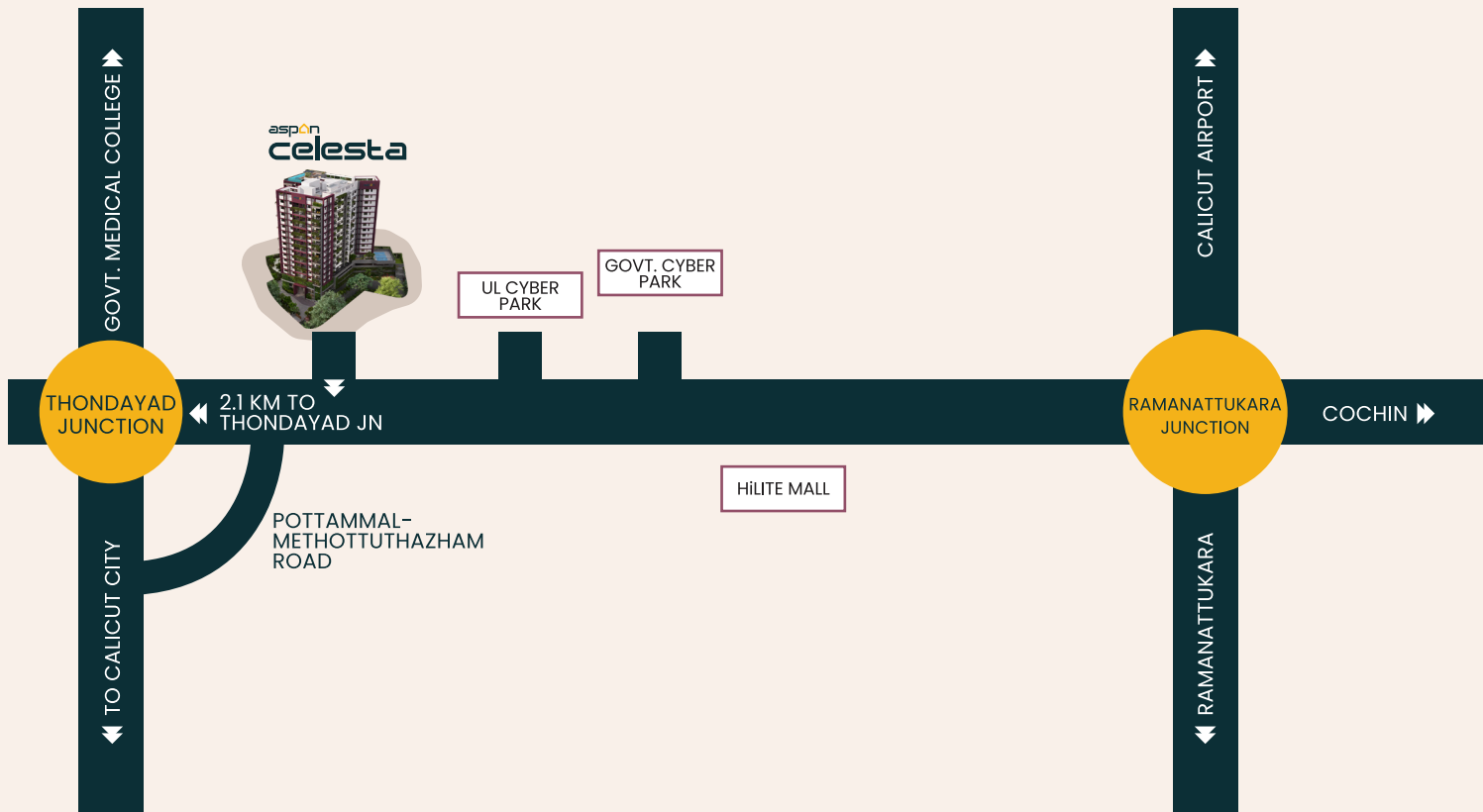
Gokulam Galleria Mall - 4.4 km

KSRTC Bus Stand - 5.2 km

Sadhbhavana World School - 6.2 km

Railway Station - 6.7 km

Calicut Airport - 24 km



# aspan celesta



📞 | +91 7025 22 99 33 | +91 7994 09 33 39

✉ | [sales@aspanbuilders.com](mailto:sales@aspanbuilders.com)

🌐 | [www.aspanbuilders.com](http://www.aspanbuilders.com)

📍 | Sreehari Building, Opposite Decathlon N.H Bypass, Pantheeramkavu  
Kerala 673019